

The Leigh & Coombe Hill Newsletter

Issue no. 213

February/March 2025

Editor Joanna Robson

Contribution email jorobsonmailbox@gmail.com

News from Coombe Hill and The Leigh residents is welcome by email, deadline for next issue is March 14, 2025



A quick Christmas roundup

Thanks to all the lovely ladies who joined us to make Christmas wreaths at St Catherine's Church on 8 December 2024 - a great afternoon and some magnificent masterpieces. **Karen M**



The Twixmas Walk was a small turnout but we all had a lovely time, the sun came out for the first time in days and a couple of drinks at the Old Spot set us up well for the return leg! **Nicky W**



Supporting Those With Sensory Loss

Thank you to everyone who used The Leigh Santa Postbox or put a festive message into the December Newsletter, you raised £298 for a small charity - Forest Sensory Services. Thank you also to Kate and Thomas H and the Austin family for being delivery elves. An acknowledgment letter will be displayed on The Leigh noticeboard. **Jo R**

Spring's just around the corner - get ready for a rubbish outing and much more!

Don't despair, the months of rain and dark evenings will soon be over and there are lots of special events to look forward to... read on to find out about the Historical Society talks, Mother's Day event, Plant Sale, sniffer dog workshop, and much more. If you know of other events, please send us the details and we'll publish them here.

Do you recognise this strange shaped building, visible from the M5 near Gloucester and wanted to know what on earth goes on inside? Or perhaps you've wondered what happens to your recycling efforts? Why not find out first hand and join us on a FREE parish outing to tour the Energy from Waste Facility at Javelin Park, Nr Gloucester?

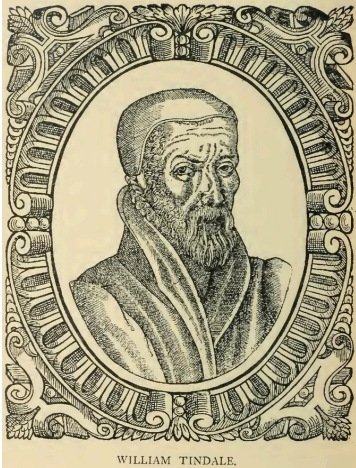
See how our landfill is being reduced whilst the facility recovers electricity, metals and aggregates from our throw-away items.

We currently have 4 spaces still available for our Parish trip on Tuesday 13 May 2025, 10am, for a presentation and tour of the Facility. Please let me know if you'd like to come along by emailing me. **Jo R** jorobsonmailbox@gmail.com





The amount of rain we've had isn't news, but it's surprising how something potentially devastating can be so beautiful. Thank you, **Julie B** for sending this in.



Norton & The Leigh Historical Society

Monday 24 February 2025
William Tyndale - One of the greatest Englishmen
 Born in Gloucestershire, martyred in 1536
 Presenter: Alan Pilbeam

Monday 24 March 2025
Royal Gloucester
 Gloucester's connections with royalty through the ages
 Presenter: Tony Conder

The meetings are held at Norton Village Hall.
 Doors open at 7.15pm for 7.30pm start.
 Cost is £3.00 per person, cash on the door.



Calling all garden owners (not necessarily gardeners!)
 Wanted! - Unwanted perennials (those are the plants that grow back every year) When Spring has sprung and you have a clump of unwanted perennial plants which need digging up, please let Jo R know (jorobsonmailbox@gmail.com) and she or a committee member will be around with a fork! Plants will be potted-up and made ready for the Annual Plant Sale, when you're welcome to buy them back at a bargain price.



Thank you, Christmas elf!

Little Thomas C from The Leigh, volunteered with his mum Katie H to deliver Christmas cards. As the smallest elf doing the rounds this year, we'd like to say a special Thank You, Thomas! Not forgetting Georgina A, Emma-Jane A, and their mother, Jane A., who are much bigger but just as much appreciated!



Lambing time for the small flock of Ileyn sheep at Daniels Orchard will be underway in February. Feel free to come and see for yourselves, count how many sets of twins or even triplets, there are and maybe feed a newborn, if you're lucky!

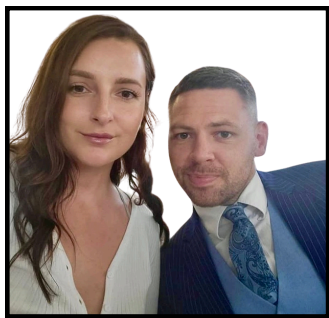
KIDS CORNER

In our growing community we would love to have your photos and junior news. For example, personal achievements, fund raisers and special events.

Simply send a good quality photo as a high resolution jpeg or PDF and tell us about the picture. Don't forget to include first name and just the initial for the surname (GDPR) and age, if you think it's appropriate.

Send to Jo for consideration at jorobsonmailbox@gmail.com





Welcome newbies to The Leigh!

Hannah and Tobias have recently bought Cyder Press Farm and moved in with their three dogs, chocolate labrador, Galaxy, Nana the 1 year old St Bernard and 14 year old golden labrador, Bodee.

Parish Council Meetings. Have your say.

With the growing number of local planning applications, you may want to attend a meeting and have your say. The next full Parish Council (The Leigh and Coombe Hill) meeting: will be on Wednesday 12 February 2025 at St Catherine's Church, The Leigh, commencing at 7.30pm – all welcome. Agendas etc can be found on theleighpc.org.uk

Church Services

2nd February, 6pm - Songs of Praise

16th February, 10.30am - Benefice Family Communion

2nd March, 6pm - Songs of Praise

16th March, 10.30am - Benefice Family Communion



Pancake Coffee Morning at St Catherine's

Watch out for the 'flipping' date in February!

Special events at Coombe Hill Farm Shop

16th February, 9am - 11am Introduction to Scentwork Workshop

Starting scent work with your dog opens so many channels...



Great for mental stimulation
As good as a 10-20-minute walk,
Fun new skill



Enhances handler and dog relationship
Lots of levels to it and lots of fun to be had!

Suitable for anyone interested in starting their scent work journey.

Learn how this fun new sport can open lots of doors for your dog.

Cost: £32.50 per dog To book email, text, call or WhatsApp

sweetpeasltd@gmail.com or 07483 328422

29th March, 9am - 2pm Pre-Mother's Day shopping. Free admission.

Fresh flowers, local crafts and refreshments from the Baking Bird and treasure at Cow Shed Garden and Antiques.



If you would like to pre-order a bouquet of flowers for collection at this event, contact Debs Tel. 07741269433 email debbietudge@hotmail.com

Dates for your gardening diaries

24 April A FREE talk, 'So Begins Your Next Gardening Adventure', will be given at Norton Village Hall. Everyone is welcome and afterwards, The Horticultural Society AGM meeting will be held - again, keen gardeners are welcome to join. 7.30pm Norton Village Hall.

2nd May The Annual Plant Sale.

If you blink you'll miss the 45 minute frenzy. Be there at 7pm sharp.

9th August Annual Horticultural Show.

The full schedule will be available in April. please give it a go.

AT COOMBE HILL

Coombe Hill Service Station

Open everyday, 6am - 10pm

Petrol, newspapers, basic groceries, frozen foods, alcohol, BBQ charcoal, firewood. Evri ParcelShop

Approved Car Buying Centre

Offers instant valuations, car collection service, and same-day payments. please contact Shaun Taylor on **07836 777268** or info@approvedcarbuyingcentre.co.uk

Coombe Workshop

Monday - Friday: 8am - 6pm

Saturday: Appointment Only

Highly qualified vehicle technicians.

Honest, trusted, friendly and skilled MOTs, services and repairs. Specialists in classic and performance vehicles, tailored to our customers' needs. **01242 896333**

info@coombeworkshop.co.uk

Coombe Hill Kitchen

Catering for all party and event needs. Hot or cold. Delivered dinner parties. Afternoon tea. Try before you buy.

Call Kate on **07971 064872** or email

kate@coombehillkitchen.co.uk

The Swan Inn

Tuesday - Saturday 12 - 10pm

Sunday 12 - 6pm

Monday - closed

Specials and discounts!

Tuesdays - Steak Night Special

Thursdays - Burger night Special AND

over 60's 25% discount. Loyalty cards.

Blue Light 10% off for NHS, emergency services and members of armed forces.

Coombe Hill Farm Shop

Thursday 10am - 2pm

With Cow Shed Garden & Antiques

Friday & Saturday 9am - 2pm

With Cow Shed Garden & Antiques

and The Baking Bird

Sunday 10am - 1pm

With Cow Shed Garden & Antiques and The Baking Bird

Farm Shop sells fresh fruit, vegetables and locally reared meat. Free-range eggs. Chiller/freezer selection. Baked goods.

Cow Shed Garden and Antiques sells a fascinating collection of decorative pieces, garden antiques and collector's items. A treasure trove of gift ideas.

The Baking Bird serves delicious homemade cakes, artisan coffees, speciality teas, hot chocolate (try a Bobby Dazzler!) and refreshing cold drinks.

French Onion Soup

Preparation time: 20 mins

Cooking time: 1 hour

Ingredients (for 4):

1lb onions

2-3oz unsalted butter

2 pints chicken or beef stock

½ level teaspoon salt

1oz plain flour

4 slices French bread, ½ inch thick

4oz Gruyere cheese



Peel and thinly slice the onions. Melt 10z of the butter in a large saucepan and add the onions. Cover with a lid and cook over low heat for about 15 minutes until the onions are soft and transparent. Remove the lid and continue frying the onions, stirring occasionally, until they are golden brown. Stir in the stock and salt. Replace the lid and simmer the soup for 30 minutes.

In a small basin, mix the flour with ¼ pint of water until thoroughly blended. Add to the soup and stir until it comes back to the boil. Simmer for 2-3 minutes until the soup has thickened, then draw the pan off the heat.

Meanwhile, butter both sides of each slice of French bread, grate the cheese and sprinkle half over the bread. Bake the bread, on a baking tray, in a pre-heated oven, at 350°F (mark 4) until the bread is crisp and the cheese has melted. Arrange the bread in individual bowls and pour over the hot onion soup. Serve the remaining grated cheese in a separate bowl.

Many thanks for this recipe, sent in by Sue and Barry, The Leigh. If you have a tried and tested recipe, or maybe a household tip or lifehack to share, please send it in!

Resident's Recommendations

If you have had a great experience, service over and above expectations or have used a company that deserves to be recommended, please let us know by sending the full name of the business, why you recommend them and their contact details.

Dog Grooming - recommendation by Amber S

Dog Grooming by Junie

Where care meets style.

June Reynolds 01242 706996

Continuing Care - recommendation by Anne H

Specialist home care for loved ones by Sadie

Supporting elderly relatives in their daily activities, ensuring they live life to the fullest. Assistance, companionship, household chores, medical assistance. Qualified NVQ3 in mental health and social care with mandatory annual updates, dementia, mental health, food hygiene, infection control, medication.

www.continuingcarewithsadie.co.uk

Free consultation 07817 469516

Housekeeping - recommended by Stella B

Hawkins Housekeeping by Katie H

Katie helped to do an end-of-ownership clean at Cyderpress Farm - it is an old listed building with many nooks and crannies, and Katie went above and beyond to make sure the house was left sparkling clean for the new owners. Katie is often booked up but if you ever need extra help, it's well worth asking if she's available.

Hawkins Housekeeping 07852 328329

Keep informed, have your say

Keep informed via The Leigh Parish Council website theleighpc.org.uk, the village noticeboard, or contact the Parish directly on leighpc@hotmail.co.uk Better still attend the meetings or even volunteer to get involved.

Tewkesbury Borough Council - Planning Portal

To view any pending planning applications go to: tewkesbury.gov.uk/services/planning/ - Planning Public Access

FixMyStreet

Use this website to report potholes, blocked drains, broken signs, manhole trip hazards etc.

Waste Wizard

Use this site if you're not sure how to recycle an item

[Waste Wizard gloucestershirerecycles.com](http://WasteWizard.gloucestershirerecycles.com)

Bin collection days

To find out when your bins are due for collection - just enter your postcode on this page: tewkesbury.gov.uk/services/waste-and-recycling

The Leigh also has a Facebook page- **Leigh Parish Community**

The Leigh and Coombe Hill Newsletter

We hope this newsletter helps our growing community connect. Please contribute stories that might be of interest to other residents. Simply send in a good-quality photo and an outline of the story, and we'll do the rest!

To minimise our impact on the environment, please opt for a digital copy by email.

Otherwise, one of our volunteers will deliver a printed version to you. If you do not wish to receive the newsletter at all, either let your delivery person know or email Jo R.

The newsletter is bi-monthly and is produced, printed and delivered by a team of volunteers. Deadline for the April/May edition is **March 14th**. Email all communication to jorobsonmailbox@gmail.com