

The Leigh & Coombe Hill Newsletter

Issue no. 215

June/July 2025

Editor Joanna Robson

Contribution email jorobsonmailbox@gmail.com

News from Coombe Hill and The Leigh residents is welcome by email, deadline for next issue is July 10, 2025



VE Day Celebration!

On Monday 5 May, 50-60 parishioners came together to mark the 80th Anniversary of VE Day. Attending the celebrations were Ruth T, sitting to the left of 99-year-old Dorothy, The Leigh's oldest resident, who will be 100 in June. Below left is our youngest attendee, Thomas, standing on a Ford C10 truck built for the British Army and used in action in 1944, kindly brought along by Chris W.



Colin D (pictured above) made a speech, saying, *'It is a privilege to give the Nation's Toast from the Parish to all those who served and give special thanks to all those who did not return. That debt can never truly be repaid, but we can and we will, remember them'*.

Despite a chilly afternoon, everyone enjoyed themselves, chatting to friends and neighbours and seemed to appreciate the complimentary cake and pastries! The afternoon was concluded with a game of rounders, during which many tennis balls were lost and even 76-year-olds scored many rounders.

Thanks to everyone who attended and especially to Anne H for jointly organising, Colin D for the speech and to Martin & Harriet R for battling with tentage against the NE wind all day! **Jo R**

The Rubbish Parish Outing

Fourteen intrepid villagers from The Leigh met up at the Javelin recycling plant on 13th May for a guided tour. Most of us must have noticed this eccentric looking building with its tall chimney when driving up the M5; but who among us knew that the straight bit of motorway by the building is actually built on top of the old runway of RAF Valence, from where Gloster Meteors flew from 1943, and Gloster Javelins a few years later.

In the lecture room at the top of the building, with magnificent views of the Cotswolds, and Gloucester Cathedral in the distance, we learnt what wafted out from that tall chimney: steam; carbon dioxide (6%); and apparently not much else. The green bin waste that goes into the plant by lorry is broken down by fire (at 850degC); and the smoke subjected to various mysterious chemical processes to remove toxins.



We were impatient to know more. So we donned Hi Vis helmets, gloves, eye protectors – and set off on our tour around this steel and concrete behemoth. The huge 'waste bunker', the height of the building, first caught our eye. We couldn't stop peering down into its garbage-filled depths. Huge steel grabs were constantly opening and closing, moving the rubbish around, and then dumping it onto the 'feed chute' of the furnace. As this conveyor belt moved slowly down the rubbish was consumed by fire – we peered through little observation windows and saw flickering flames, an evocation of hell. At the end of the process, fire and flames had produced superheated steam; any metal that emerges from the flames is extracted by magnetic force. The remaining ash is cooled and used as a substrate for roads, etc.

The steam produced by the furnace turns huge turbines which (we were told) produce enough electricity for 25,000 households. What a fantastic machine this is. Miles of piping, ducts, tubes of all sizes, steep metal staircases, dizzying heights: akin to an engine room of an enormous ocean liner.

The next step – reducing the amount of plastic that ends up in our green bins. The electricity generated is currently only regarded as 50% renewable; changes to reduce the incidence of single use plastic will hopefully improve this percentage in the future. And one bit of advice – NEVER put lithium batteries or electrical goods into your green bin. The result would quite literally be explosive... **Oliver H**

SO MUCH FUN

Roll Up! Roll Up!

For The Leigh Village Fete

Cheltenham Community Choir and Dog Show

Saturday 7 June. 12pm - 3pm St Catherine's Church, The Leigh

All proceeds to St Catherine's and Sue Ryder

Programme:

9am: Setting up
12pm: Fete Opens
12.30-12.50: Cheltenham Community Choir
1.20-1.40: Cheltenham Community Choir
1.50pm: Fun Dog Show
2.30pm: Raffle & Competition Winners announced
3pm: Fete Closes / Clear Up

Dog Show

Waggiest Tail
Best Fancy Dress
Most Appealing Eyes
Best Biscuit Catcher
Best Swagger
Best Trick - dog under 1 year
Best Trick - dog over 1 year

Best Six Legs (best presented and behaved dog and handler!)

Entry: £1 p/class Rosettes awarded to 1st, 2nd and 3rd

Could you donate something?

(can be left in the Church between 1-4 June)

Bottles of wine, soft drinks, sauces etc
Tombola prizes - adults and children's prizes
Good second-hand toys

Huge new toy for 'Guess the Name'
Jams, preserves, produce (fruit/veg)
Unwanted birthday/Christmas presents
Unwanted smellies, stationery, Bric-a-Brac, Sweets
Cakes and Plants, please bring on the day

Any questions?

Please email Jo R, jorobsonmailbox@gmail.com
or Hazel C, h_cotton@hotmail.com



Open Studio Invitation

Rust Bucket Workshop invites you to explore the world of whimsical, peculiar creatures made from collected vintage wood and metal. Join me for Cheltenham Open Studios, 7-15 June, as part of a celebration of local creativity with 78 venues across Cheltenham and surrounding areas. My workshop at home is open every day from 10am to 4pm. See how I turn scrap into sculptural delights and discover one-of-kind treasures that bring a touch of wonder. Find me at Venue 72, Bishops Cottage, Blacksmiths Lane, The Leigh, GL19 4AG. **Hayley W**



Printed copies are available at Coombe Hill Farmshop. Or you can download a guide and map to plan your route.

cheltenhamopenstudios.org.uk

Swift Action Taken! Well Done and Thank You To The Wharf Residents

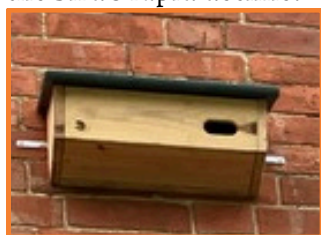
Swifts are on the Birds of Conservation Concern (BoCC) Red List and classified as Endangered on the IUCN Red List. Their numbers declined by 60% between 1995 and 2020.



Swift boxes cost between £35 and £50 each, or you could make one! For construction guidelines, where to position it and how to attract Swifts, search Gloucestershire Wildlife website.

gloucestershirewildlifetrust.co.uk Winchcombe Swift Volunteer Group have a website (Google Winchcombe SSG), a Facebook Group or you can email them: wssgroup7@gmail.com

Swifts prefer nesting in crevices and the open eaves of older style buildings. Demolition of prime nesting sites and modern buildings do not offer a nesting option. Therefore, housing is the main contributing factor to the bird's rapid decline.



Swift



Swallow



House Martin



In April 2024, I met with Brian Weller of the Winchcombe Swift Volunteer Group about putting up swift boxes. He was very knowledgeable about positioning the boxes and timing to attract the birds. All the Wharf residents were enthusiastic and as The Parish Council had asked the community how they'd like to spend the CIL money, this seemed a positive idea for our small community.

Kate Tilling of the Parish Council purchased the good-quality boxes from the RSPB. In April this year, 14 boxes were put in place by Alistair T on all the suitable houses at the Wharf. Brian has lent us a Swift 'caller' which sends out swift calls twice a day to entice birds.

Other areas of the community could also put up boxes to make several colonies in our area. Many thanks to everyone involved in this local project especially Pip H. Let's hope the Swifts come to nest sometime soon - we can wait. **Rachel D**



Take a Walk on the Wild Side

Norton has two weekly walking groups and you're welcome to join in! The Wainlode Walkers set off every Friday morning, ranging from two to fourteen people. Each week they discover footpaths and countryside around Norton and further afield to May Hill, The Malverns, Beckford, for example. Ashleworth is a particular favourite, thanks to the promise of tea, coffee and cake! While most walks are around 8-10 miles, they are occasionally longer.

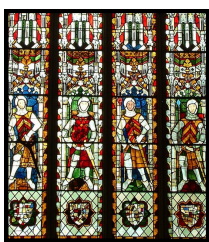
The Tuesday Trotters are a more leisurely group who prefer less serious expeditions. Distractions are plentiful on a Tuesday trot: think vibrant blooms, towering trees, glimpses into charming gardens, birdsong, tranquil ponds, ancient churches, and crucially, indulging in light refreshments.

Both groups cherish the camaraderie as much as the miles covered, and truly embrace the philosophy, 'It's not the destination but the journey'. Departure on both Tuesday and Friday is from Norton Village Hall carpark at 9:30am, and anyone wanting to join in is welcome to simply turn up.



If anyone sees any blocked public footpaths or Bridleways, please could they report them to Anthony Bowness so that they can be investigated.

Chairman: Leigh Parish Council anthonybowness@gmail.com



Norton & The Leigh Historical Society

This month's talk will be on Tewkesbury Abbey, An Armchair Guided Tour will be given by Richard Goddard

There's no need to book, just come along to Norton Village Hall. To be held in The Committee Room, Monday 23 June 2025. Arrive 7.15pm for 7.30pm start Entrance £3

Everyone is welcome

AT COOMBE HILL

The Swan Inn

Tuesday - Saturday 12 - 10pm

Sunday 12 - 6pm

Monday - closed

Specials and discounts!

Tuesdays - Steak Night Special

Thursdays - Burger night Special AND over 60's 25% discount.

Loyalty cards. Blue Light Services 10% off.

Coombe Hill Farm Shop

Thursday 10am - 2pm

With Cow Shed Garden & Antiques

Friday & Saturday 9am - 2pm

With Cow Shed Garden & Antiques and The Baking Bird

Sunday 10am - 1pm

With Cow Shed Garden & Antiques and The Baking Bird

Farm Shop sells fresh fruit, vegetables and locally reared meat. Free-range eggs. Chiller/freezer selection. Baked goods.

Cow Shed Garden and Antiques sells a fascinating collection of decorative pieces, garden antiques and collector's items. A treasure trove of gift ideas.

The Baking Bird serves delicious homemade cakes, artisan coffees, speciality teas, hot chocolate (try a Bobby Dazzler!) and refreshing cold drinks.

The Greatest Little Show on Earth, is Happening on Your Doorstep!

The annual Horticultural Show will be held on 9th August at Norton Village Hall. Help celebrate a tradition of country life that has been happening for longer than any of us can remember. There are classes for every age and ability, so join in the fun and enter a class or two, you never know, you might win a prize!

Photography

Gardening

Flower Arranging

Baking

Jam making

Brewing

Wine Making

Painting

Composting (!)



It's all in here!



Get Your Schedule NOW!

Available from:

**Coombe Hill Farm Shop or
Jo R, Oliver H, Mary C,
Harriet R, Lucy C.**



Parish Council

At the Annual Parish Council meeting on 14 May, the following Officers were elected:

Chairman - **Anthony Bowness**

Vice Chairman/Chair Mentor - **John Arkell**

Responsible Finance Officer - **Karen Morton**

Highway Representative - **Richard Theyer**

At the meeting John Arkell gave notice that he would not be standing at the Parish Elections in May 2026. So if you feel you would like to get involved in making decisions about your local community, local issues and make a significant contribution to the parish in which you live, this is the position for you!

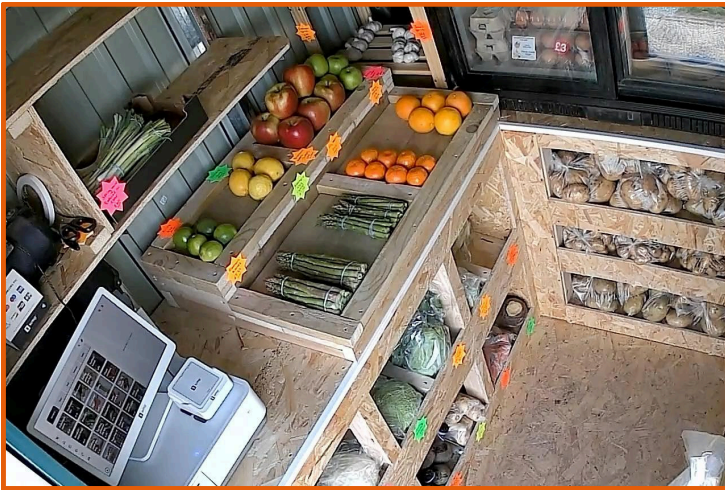
To learn more, why not pop along to a Parish Council meeting or contact the Parish Clerk, Kate, via leighpc@hotmail.co.uk.

Next meeting: Weds 13 August, 7.30pm, at St Catherine's



Has Anyone Clocked This?

I lived at Prospect House, The Leigh, with Anita and Derek until 2014. I owned a grandmother clock which had been presented to my great-great-grandfather for his life's work as a pharmacist. When we moved, there was no room for the clock, and a family (I think in The Leigh), kindly agreed to take care of it until I could house it. BUT... we've lost their details! Could anyone shed light on this for me? Please email me: rosiesargeant@hotmail.co.uk or WhatsApp +19493657571 Thank you! **Rosie S**

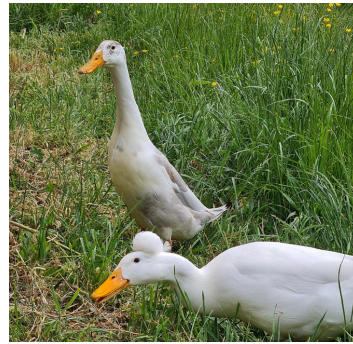


The Leigh Shed is selling fresh free range eggs, local and homegrown fruit and vegetables from The Leigh village: Astley View, Church Lane GL19 4AF.

Continuing to grow, bringing more new produce, fresh pickles and homemade cakes in the near future.

Orders welcome.

lgriffithscontractingservices@hotmail.com / 07932 759162



Two Little ducks!

Two drakes are looking for a new home. They are hand reared and very friendly. They enjoy swimming and eating and are guaranteed to keep you entertained.

For more information call Anne 01242 680244



Volunteers wanted

Please help keep our village fete running as a free community event, and offer to help in some way. Raffle, Stacking chairs, man a stall, serve tea for an hour. Contact Jo R or Hazel C by email: jorobsonmailbox@gmail.com h_cotton@hotmail.com

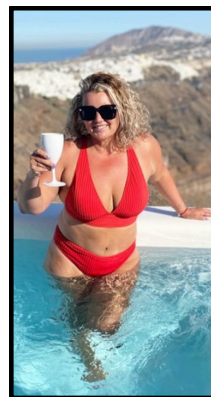
Church Services at St Catherine's

1 June, 6pm Evening Prayer

15 June, 10.30am Family Holy Communion

6 July, 6pm Evening Prayer

20 July, 10.30am Family Holy Communion



Travel Talent is Here to Help

I live in The Leigh with my husband, 3 girls, 1 dog, 1 pony and 7 chickens. I love making people feel better, whether that's improving their health and how they feel in their body, or creating amazing holiday packages for rest and relaxation!

My talents are endless so whether it's a 6* holiday to the Maldives, a cheap family break in the Sun, a city break, a UK theatre break, or even airport car parking/car hire please consider me for your next trip!!

Catherine Glazebrook the_travel_coach
catz_marr@hotmail.com

Keep in touch, stay informed

Keep informed via The Leigh Parish Council website theleighpc.org.uk, the village noticeboard, or contact the Parish directly on leighpc@hotmail.co.uk Better still attend the meetings or even volunteer to get involved.

Tewkesbury Borough Council - Planning Portal

To view any pending planning applications go to:

tewkesbury.gov.uk/services/planning

FixMyStreet

Use this website to report potholes, blocked drains, broken signs, manhole trip hazards etc.

Waste Wizard - How to recycle an item

WasteWizard.gloucestershirerecycles.com

Bin collection days

To find out when your bins are due for collection - just enter your postcode on this page:

tewkesbury.gov.uk/services/waste-and-recycling

The Leigh Facebook page - **Leigh Parish Community**

The Leigh and Coombe Hill Newsletter

We hope this newsletter helps our growing community connect. Please contribute stories that might be of interest to other residents. Simply send in a good-quality photo and an outline of the story, and we'll do the rest!

To minimise our impact on the environment, please opt for a digital copy by email.

Otherwise, one of our volunteers will deliver a printed version to you. If you do not wish to receive the newsletter at all, either let your delivery person know or email Jo R.

The newsletter is bi-monthly and is produced, printed and delivered by a team of volunteers. Deadline for the August/September edition is **July 10th**. Email all communication to jorobsonmailbox@gmail.com